

Document : SE90262 Install Manual
Version : 1.0
Date : 2011-07-01

Version Notes

1.0 Initial Release

This document describes the process of installing and configuring the SE90262 on your computer.

Included in your SE90262 kit.

- ☐ 1. Ethernet cable (NOT crossover cable but straight through cable).
- ☐ 2. **\Tibbo Ethernet Module Software** disk.
- ☐ 3. SE90262 Module with wall power supply.

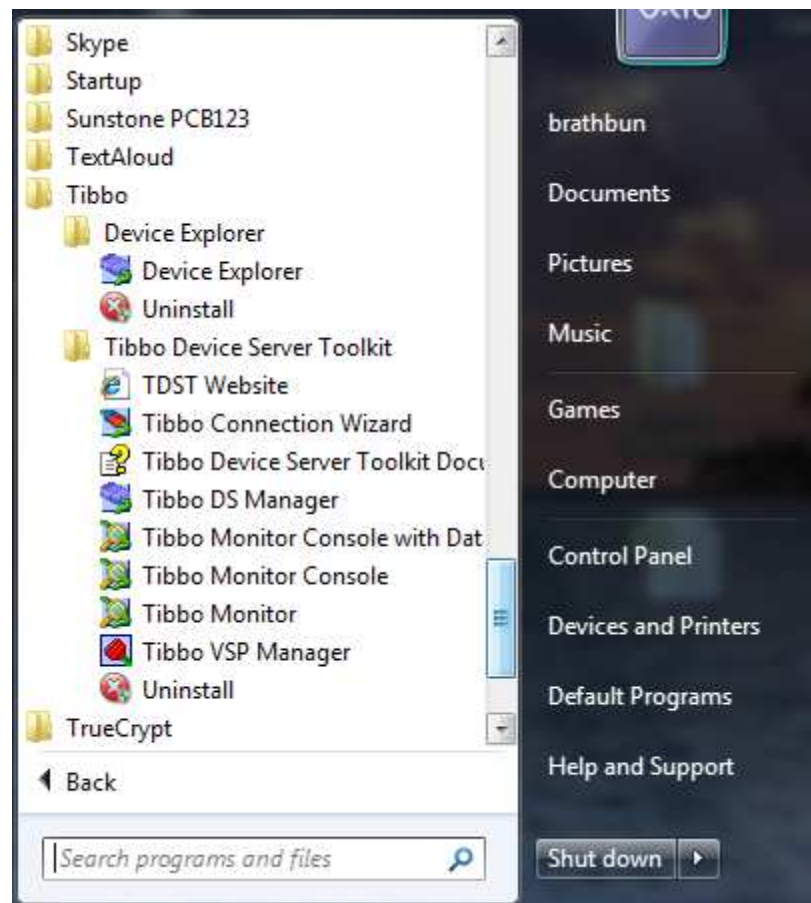
Setup

- ☐ 1. Install the Device Explorer program by running the following **tdevexplore-1-00-01.exe**. Allow the program to install with its default.
- ☐ 2. Install the Tibbo Server Tool Kit program by running one of the following -
 - A. For Windows 64-bit run **tdst-5-08-05-x64.exe**.
 - B. For Windows 32-bit run **tdst-5-08-05-x86.exe**.

Allow the program to install with its default.

- ☐ 3. Record your wireless IP settings here.
 - A. IP Address _____ . _____ . _____ . _____ (Example 192.168.200.3)
Mask 255 . 255 . _____ . _____ (Example 255.255.255.0)
- ☐ 4. Set your wired TCP 4 IP settings to the same first 3 IP values and add 153 for the fourth and then set the mask to the same mask as above. (Example 192.168.200.153)

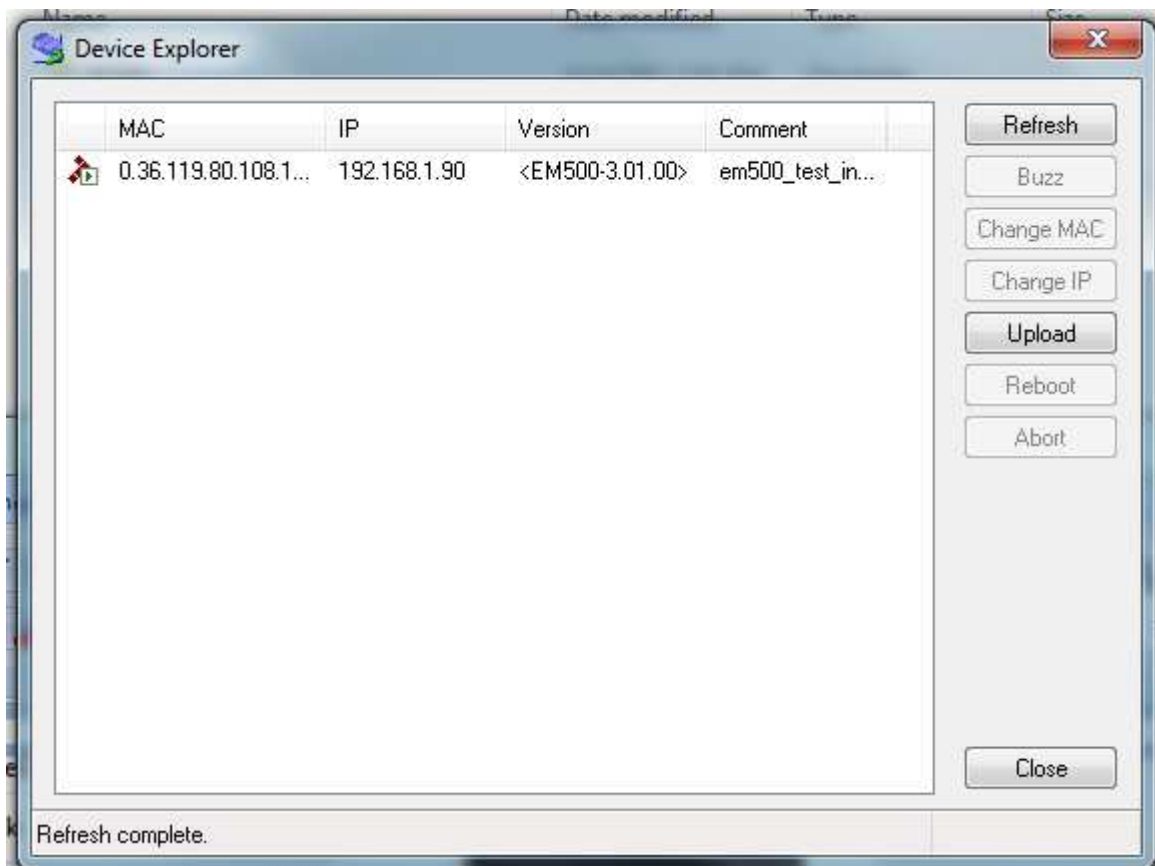
- ☐ 5. Under the start menu you will see the following. The programs of interest are listed here.



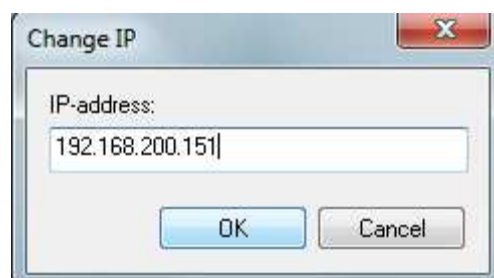
- A. Device Explorer
Program for locating device on MAC address and loading software.
- B. Tibbo DS Manager
Program for device configuration.
- C. Tibbo VSP Manager

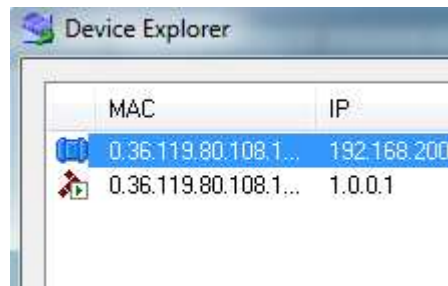
Program for Virtual Serial Port configuration.

- ☐ 6. Plug in the power to the SE90262.
- ☐ 7. Connect the supplied straight through Ethernet cable between the SE90262 and the computer.
- ☐ 8. After waiting a minute for the module to boot, Under **Start** menu, in the **Tibbo** program group, click the **Device Explorer** program under the **Device Explorer** group. The following screen is an example of what you should see, the module, its MAC address and its IP address.

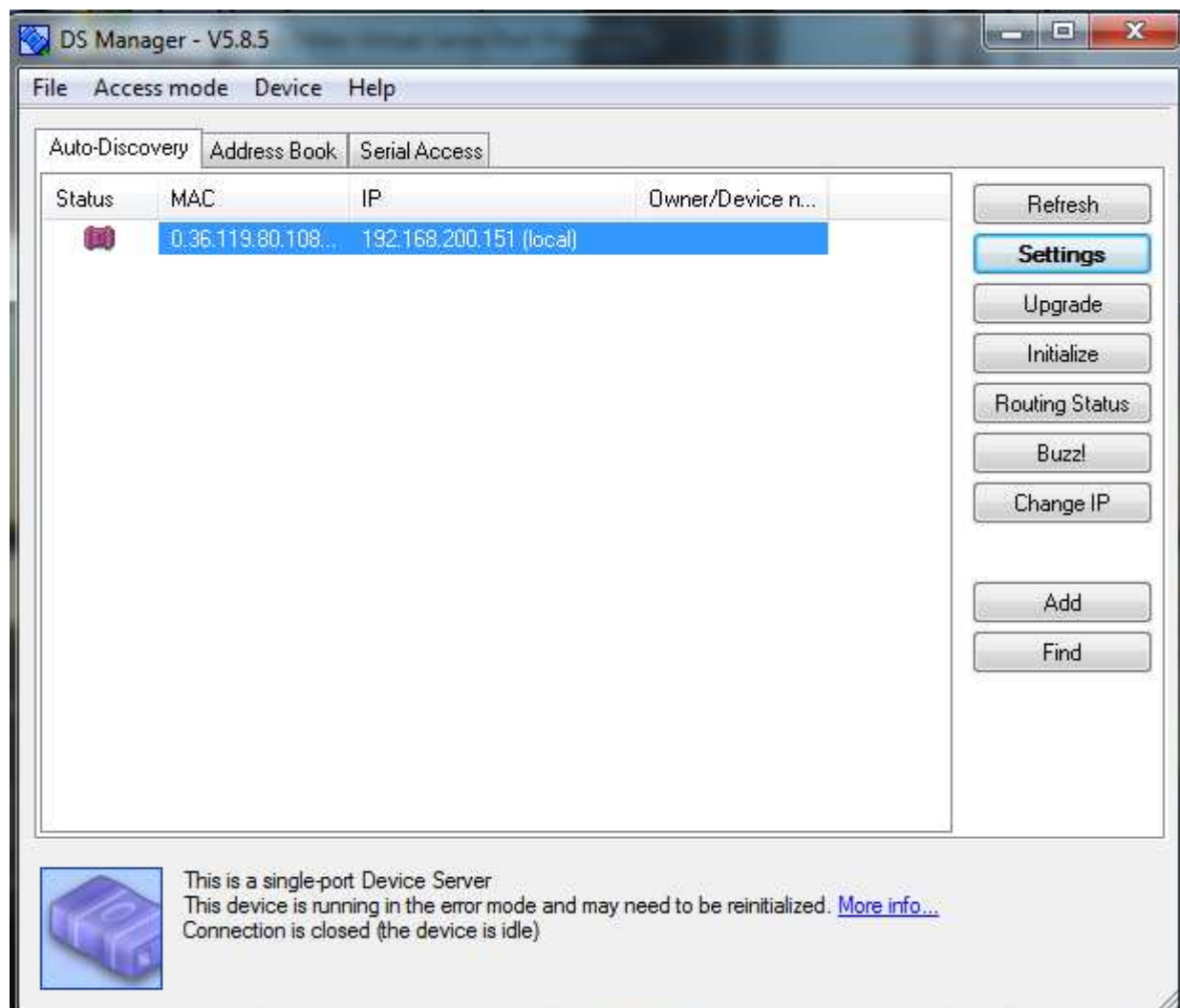


- ☐ 9. Highlight the top line and click the **Change IP** button.
- ☐ 10. On the following dialog box, enter an IP address 1 higher than the IP address set on your wired Ethernet connection in step 3. (Example 192.168.200.154) If all works correctly, the grayed out graphic image of the module should turn blue.

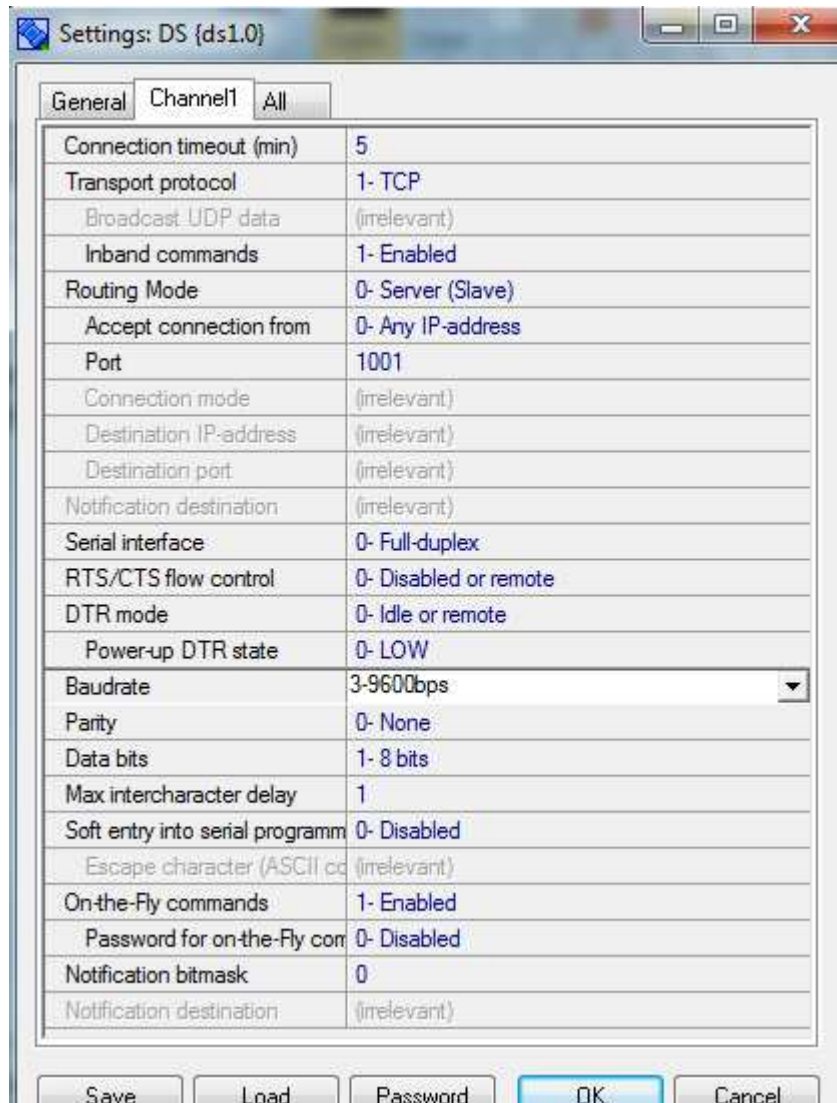




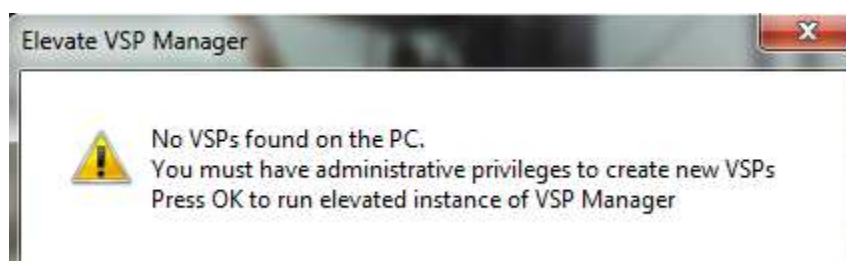
- ☐ 11. Close the Device Explorer program. Under **Start** menu, in the **Tibbo** program group, click the **DS Manager** program.



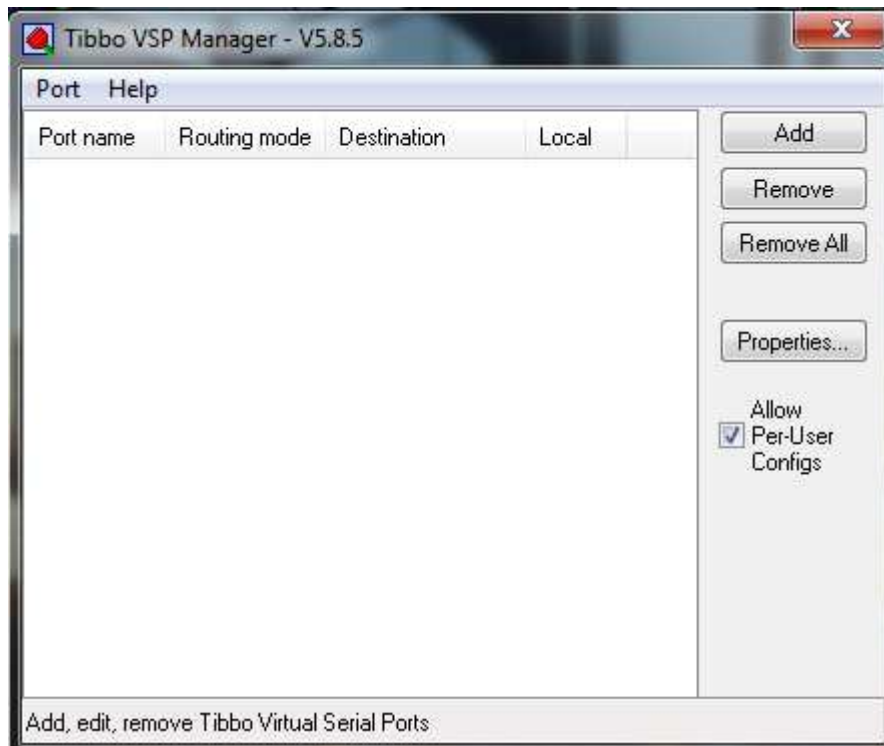
- ☐ 12. Click the device and click the **Initialize** button. Wait for the module to be reset and rebooted. After several message dialog boxes the device should return to the blue state.
- ☐ 13. Select the device and click **Settings** button. On the **Settings** dialog select the **Channel1** tab. Set the **Transport protocol** to **1-TCP**. Set the **InBand commands** to **1-Enabled**. Set the **default Baud Rate** to **9600**. Leave all other settings alone. Click **OK** to upload setting changes.



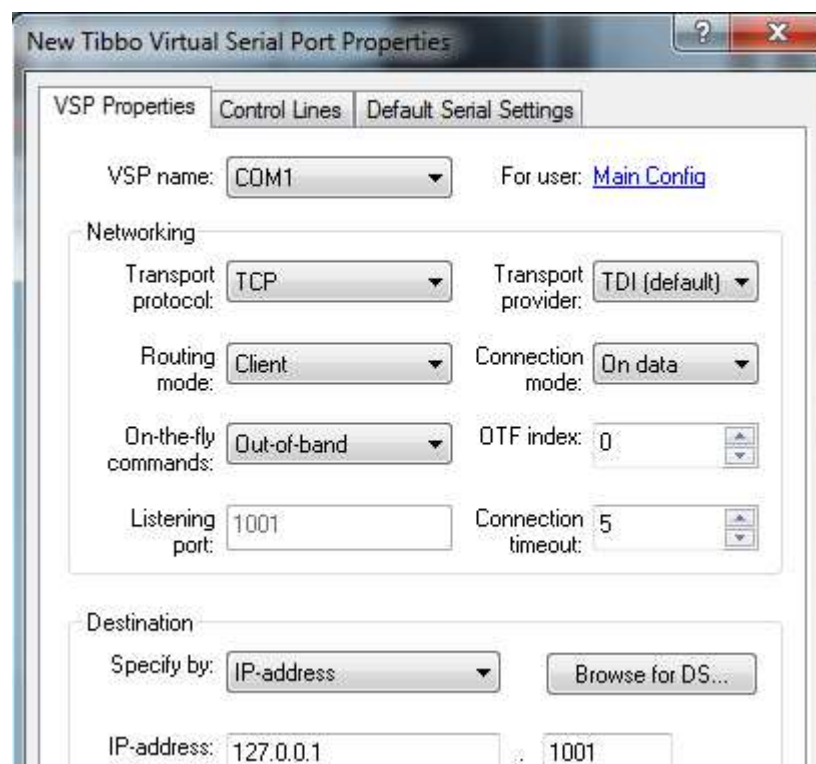
- ☐ 14. Close the DS Manager. Under **Start** menu, in the **Tibbo** program group, click the **Tibbo VSP Manager** program. When run the first time the following will appear, click OK. Windows 7 may come up with an addition warning. Let the program continue.



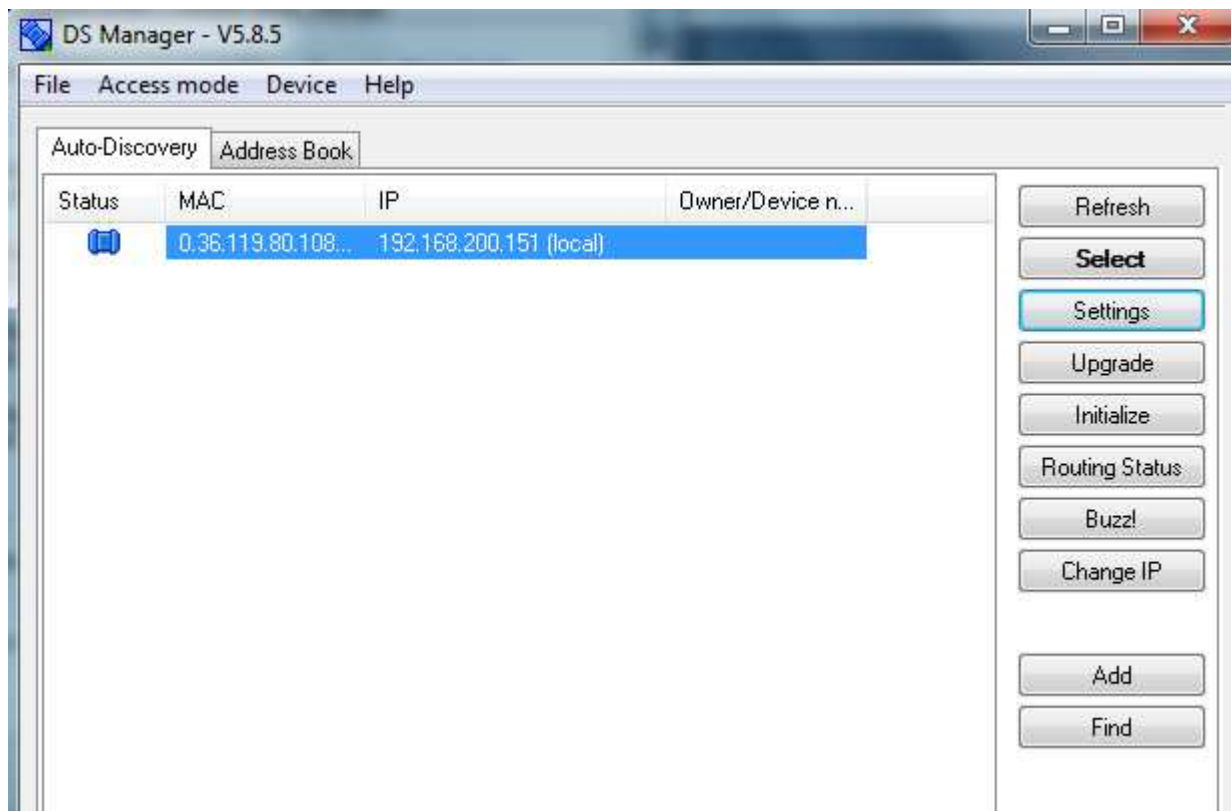
- ☐ 15. On the program screen click the Add button.



- ☐ 16. On the properties dialog, click the Browse for DS... button to locate the SE90262.



- ☐ 17. This automatically starts the DS manager program. On the DS Manager form double click on the module to select it.



- ☐ 18. It will return to the VSP dialog. Make sure the following is set, **Transport Protocol** is set to **TCP**, **On-The-Fly Commands** is set to **In-band**. Click **OK** to configure the VSP. Close the VSP setup program when complete.